



Monmouthshire
Meadows Group
Annual General
Meeting 2025

Agenda

1. Minutes of last AGM for approval
2. Chair's report
3. Treasurer's report
4. Election of Trustees
6. AOB
7. Presentation

Highlights

- Open Meadows
 - Wolvesnewton
 - Lower Gocket
- Training Courses
 - Plant ID, Scything, Fungi ID
- Surveys

Steph Tyler, Elsa Wood, Sheelagh Kerry, Wendy Tyler-Batt

22 areas, from gardens to farms

Consultation to MCC on land management to enhance biodiversity.
- Work parties
 - Thanks to Wye Valley National Landscape volunteers



Highlights

- Outreach
 - Monmouth Bee Festival
 - Seedy Sunday, Monmouth
 - GWT Fungi Fun Day
- Autumn meeting
 - 'Trees or Grasslands for a Sustainable future?'
- Social media
 - Sarah Dusgate – Instagram & Facebook
- Networking
 - National Meadows Day
- Strategic review



GRASSLAND FUNGI

a field guide

Publication

Jon Dunkelman & Elsa Wood

- Surveying grassland fungi since 2015
- Lots of positive reviews
 - Based on Wye Valley fungi but with national application
 - Scholarly book but accessible language
- Includes newly-identified species

Pearlescent Waxcap



3rd edition

Elsa Wood and Jon Dunkelman

Additional photographs by Keith Moseley and Malcolm Schuyt

Governance

- Risk register identified significant risks with over-reliance on key individuals leading to possibility of organisational failure in case of illness or retirement
 - Botanical surveys:
 - Recruiting additional botanists
 - Outreach events:
 - Recruiting to a Volunteer Committee
 - Membership
 - Newsletter, software options
 - Reserves management
 - Reserves Management Committee

Strategic review

Reserves:

- Reserves Management committee
- Agreed objectives:
 - *To manage the reserves held by MMG in line with the objectives of the CIO; so as to conserve and restore the diversity of plant and animal species native to that environment*
 - *To serve as an exemplar of good management practice*
 - *To provide educational opportunities to the wider community*

Connectivity:

- [Mapping](#) of members' areas

Community engagement:

- Volunteer committee
- Cattle monitoring for [Wet Meadow conservation grazing](#)

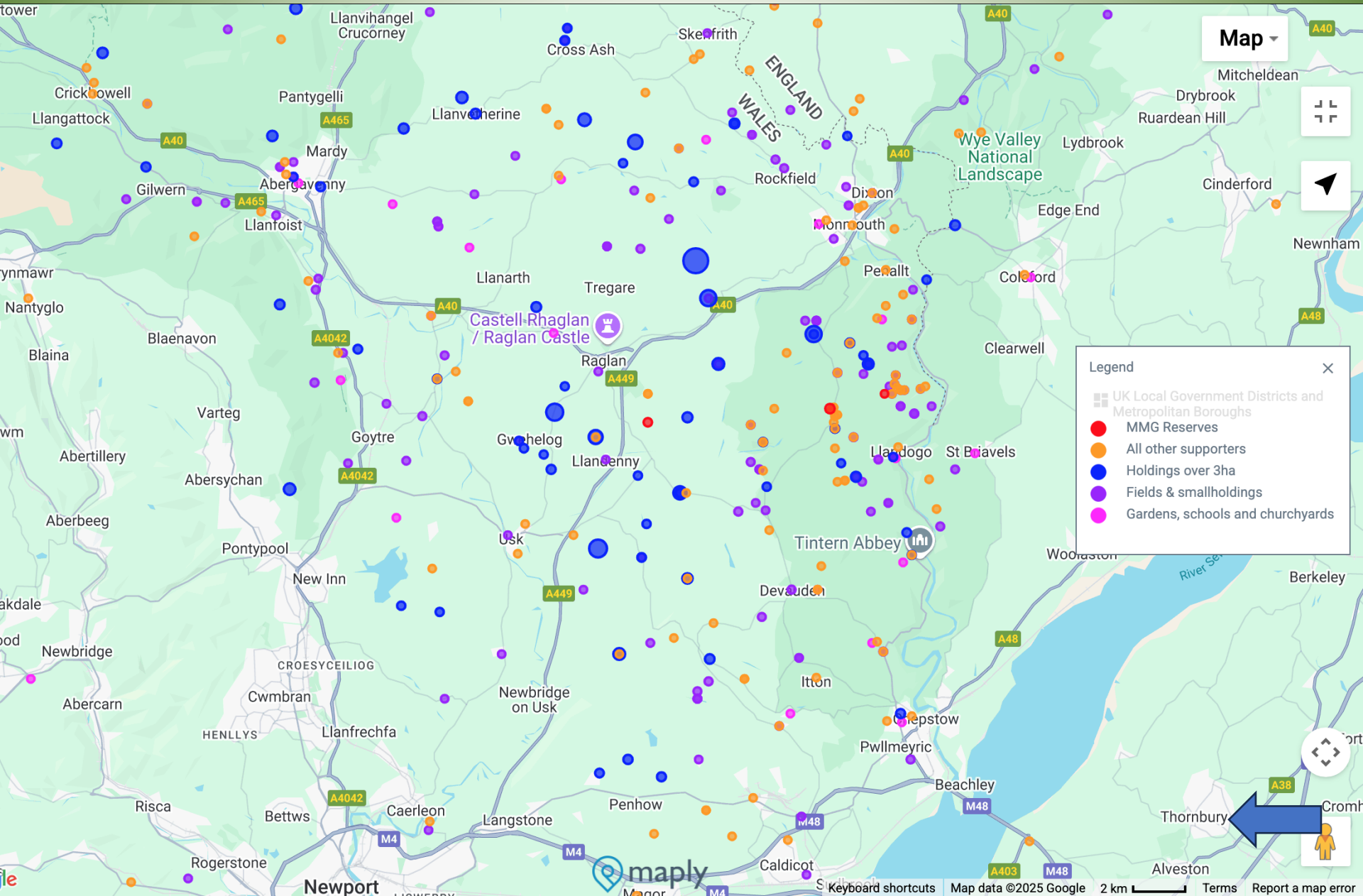
Continue to offer:

- Free initial survey to members
- Advice to members

Continue to maintain good relationships with Gwent Wildlife Trust

Continue to promote species-rich grassland of members for consideration by the Local Wildlife Sites panel

Momouthshire Meadows Group



Conservation Grazing Wet Meadow provided by Grazing Management

- Funded by Wye Valley National Landscape Sustainable Development Fund
- 10 Cattle grazing with radio-collars; NoFence technology for around 4 months a year for 2 years
- Aims:
 - Improve biodiversity of both wildflowers and invertebrates
 - Trampling e.g. bog vegetation where meadowsweet dominant; & bracken
 - Dung provides nutrition for a variety of invertebrates
 - Tussocky sward provides shelter for insects and bird life, as well as amphibians
 - Social cohesion:
 - Group of volunteer livestock checkers trained by GM
 - Meet the Cattle events
 - Engage with local primary school



Membership

24-25

Memo 23-24

Paid-up members

Individuals	361	357
Groups	7	
Sites	311	278

New members 2024-25

Individuals	35	39
Sites	29	

Members not paid up

83	85
----	----

Monmouthshire Meadows Group

Statement of Financial Accounts: 2024-25

Cash accounting basis

	2024-25			<u>Memo:</u> <u>2023-24</u>	
Opening bank balance (at 1 April 2024)	£	68,057	01 April 2023	£	63,570
Total Receipts	£	11,640		£	14,967
Total Expenditures	£	13,314		£	10,480
Net Surplus / Deficit	£	(1,674)		£	4,487
Closing bank balance (at 31 Mar 2025)	£	66,384	31 Mar 2024	£	68,057

Receipts

		2024-25	2023-24	
Membership Subscriptions	£	4,263.00	£	4,571.00
Donations	£	1,324.27	£	847.10
Welsh Govt Rural Payments	£	3,227.39	£	3,218.27
Grazing income	£	343.00	£	865.00
Events	£	1,403.77	£	2,284.41
Sales	£	48.03	£	362.00
Wayleave payments	£	10.65	£	10.33
Interest	£	878.62	£	719.98
Restricted funds:				
Grassland Fungi Book Sales	£	141.52	£	2,088.78
Total Receipts		£ 11640.5		14,966.87

Expenditure

Insurance	£ 342.93	£ 339.38	
Meadow Survey costs	£ 222.40	£ -	
Meadow Maintenance work	£ 443.00	£ 544.34	
Mowing Equipment & Maintenance	£ 73.38	£ -	
Wet Meadow rent	£ 1,520.00	£ 1,520.00	
Events	£ 2,022.29	£ 2,660.90	
IT/Website & Admin	£ 43.20	£ 181.19	
Printing	£ -	£ 62.29	
Grassland Fungi Book costs	£ 7,646.69	£ 171.84	
GWT Grasslands Matching Appeal Sponsorship	£ 1,000.00	£ 5,000.00	
Total Expenditures	£13,313.89		£10,479.94

Election of Trustees

Continuing Trustees

Clare Adamson
Judith Carruthers
Teona Dorien-Smith
Marilyn Dunkelman
Maggie Hamlen
Sally Jones - Chair
David Llewellyn – Treasurer
Rachel Morgan
Steph Tyler Honorary President

New Trustee

Saran Allott-Davey

Retiring

Pam Manfield with many thanks
for her support with minute-taking
over the past 7 years

Steph Poulter a founder member
and trustee for over 15 years,
responsible for ponies

Dick Coates a trustee for 8 years
with a special interest in Wet
Meadow

As per our constitution clause 13: each of the trustees shall retire from office with effect from the conclusion of the AGM next after his or her appointment but shall be eligible for re-election at that AGM.



Thank you!
Any questions?

Jacinth & Jemima



Steph & Alan Poulter

