



# Monmouthshire Meadows Group

---

ANNUAL GENERAL MEETING 2021

# Agenda

---

- Minutes of 2020 AGM
- Chair's and Treasurer's reports
- Election of committee
- Questions & any other Business
- Break
- Talk: Sean Cole on Orchids
- Q&A/Discussion

Any questions on the AGM please enter in the Chat box and we will deal with them before the break

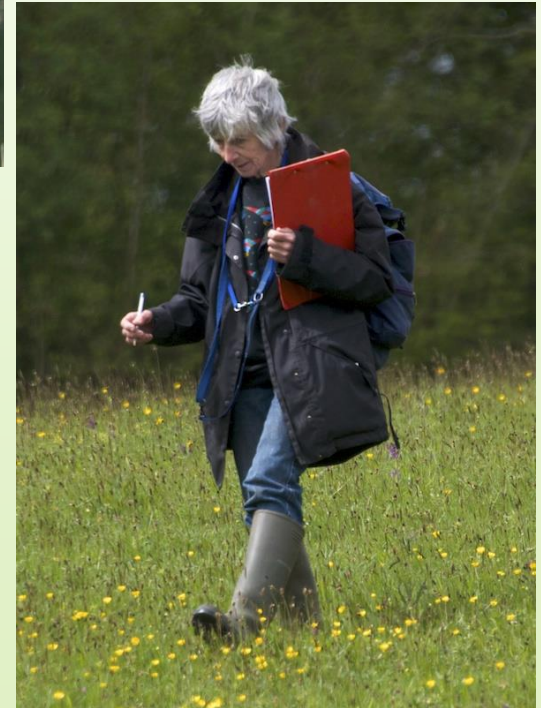


Green-winged Orchid, New Grove Meadow  
(Keith Moseley)



# Stephanie Tyler MBE

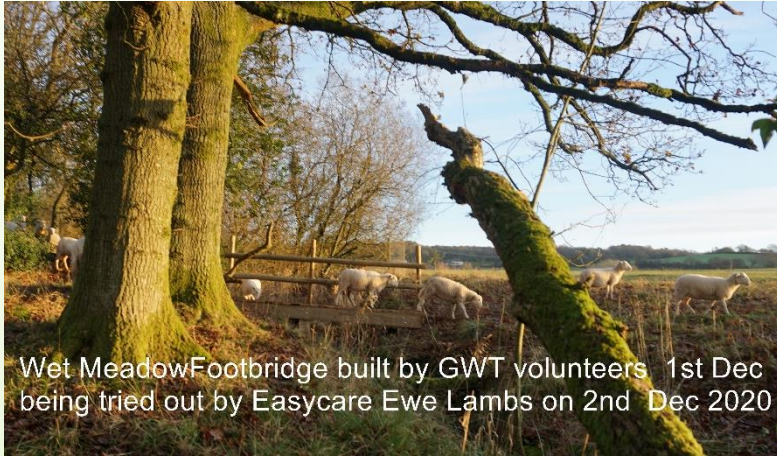
---





# Wet Meadow gate & fencing

---





# Trackmaster mowing

---



# Surveys of members' land

---

Steph, Elsa and Sheelagh

19/20 - 24 sites (including 2 re-visits)

20/21 – 21 new sites, 3 re-visits

New Local Wildlife Sites still being found

This year – 3 new sites qualify as LWSs



Guin Vaughan's meadow at  
Tren Grove House



# Membership numbers

---

Last year, despite lockdowns  
(April 2020 to March 2021)

- 27 new members
- 218 paid-up members at year end
- Additional 70 on mailing list behind with subscriptions

Reminders are sent twice a year

124 members (57% of paid-up members) have standing orders



Cowslips and Dog Violets in Martin  
& Patricia Milling's garden

# Newsletter

## Monmouthshire Meadows

Issue 34

Registered Charity No. 1192542

Spring 2021

### Conserving and Restoring Wildflower-rich Grasslands in Monmouthshire

#### In This Issue

|  |       |
|--|-------|
| From the Chair.....  | 1     |
| Open Meadows in 2021.....                                    | 3     |
| AGM & Spring Social.....                                     | 3     |
| Day-Flying Moths.....  | 4     |
| New Members.....   | 6     |
| Monmouthshire Botany Group ...                               | 7     |
| MCC backs Nature isn't Neat.....                             | 8     |
| Members' Meadows.....  | 10    |
| Hanbury Field, Caerleon.....                                 | 11    |
| Managing Our Meadow.....                                     | 13    |
| Twenty Years of Green Tape.....                              | 14    |
| News from Around .....                                       | 16    |
| Dung beetles, Neonicotinoids,<br>Grass Snakes, Local News .. | 16-19 |
| Grassland Fungi .....  | 19    |
| Diary Dates and Events.....                                  | 20    |

#### Contact Us

For information about the group or to join MMG contact our membership secretary Marilyn Dunkelmann [marilyn@monmouthshiremeadows.org.uk](mailto:marilyn@monmouthshiremeadows.org.uk) tel. 01600 860031, or use our online membership form

Contributions to the newsletter or items for the web site can be sent to Marilyn

Other contact details as well as news and events, and information about our meadow reserves at Kingcoed, Maryland and Trellech, are on our web site [www.monmouthshiremeadows.org.uk](http://www.monmouthshiremeadows.org.uk)

Follow us on Twitter  
@MonMeadows



#### From the Chair Rachel Morgan

Some really good news in this dreary winter is the awarding of an MBE to our illustrious President and erstwhile Chair Steph Tyler for services to nature conservation in the UK and Africa. Congratulations Steph!

A year ago we had hardly heard of Covid, and now many are suffering, but one beneficiary is the flora and thus fauna. Cost cutting exercises by councils have led to reduced mowing. In particular, in Monmouthshire you can read about how this is boosting the Nature isn't Neat movement on page eight. Let us hope that the new cut and collect mowers become the norm nationwide. Conversely it is a scandal that the Government threatens more destruction with its volte face on Neonicotinoids.

Our reserves have not been neglected. Again we have had the Texels grazing at Wet Meadow, where work parties have been continuing when the rules allowed. Grants from Trellech United Community Council and the Welsh Church Fund have been used to replace the wicket gate into the forest land, put new fencing and gate on the roadside (thanks to Monmouthshire County Council for the gate), and to put up some board walk bridges over ditches. All work done at Wet Meadow is in collaboration with Gwent Wildlife Trust.

At Ida's Meadow near The Narth, again, as with many small parcels of land, we had problems getting rid of the hay. Owain Rees was able to sort it in mid-September. Our Kingcoed reserve was again grazed by Eifion's Welsh mountain sheep.



Wet Meadow in the January snow (Dick Coates)

#### Day-Flying Moths in your Meadow Wendy Tyler-Batt

One of the delights of a wildflower meadow is the wonderful habitat it provides for a wide range of invertebrates among which are the day-flying moths. As the title suggests, these moths buck the trend of flying at night, and indeed the larger ones are easily mistaken for butterflies. Just to confuse, some of the nocturnal fliers are easily disturbed from vegetation during the day and other species fly both by day and night. As far as the 'what's the difference between a moth and a butterfly' goes, moths generally have feathery and not clubbed antennae, and most hold their wings horizontal when at rest; but there are exceptions.

Grasses, rushes, sedges and flowering plants in your meadow will provide food sources for both the larvae (caterpillars) and the adults. Some moth species rely on specific plants whilst others feed on several (polyphagous). Of course, the greater the number of plant species present, the greater diversity of moths your meadow will support.

Moths are pollinators and an important element of the food chain, being prey for birds, bats and insectivorous mammals. There are over 2,500 species of moths recorded in the UK of which approximately 200 may be readily seen during the day. Here are some examples that frequent our Monmouthshire meadows.

##### Silver Y (*Autographa gamma*)

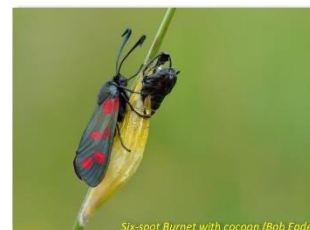
The name (like so many others for moths) describes the look! The metallic silver y-shaped mark on each forewing is diagnostic and this is one of the most commonly seen day-flying moths from May to September. But it is also an immigrant so can turn up in any month of the year. Often seen energetically flying from flower to flower and easily disturbed from vegetation. It also flies at night. The larvae are polyphagous.

##### Six-spot Burnet (*Zygaena filipendulae*)

A very distinctive glossy black moth with six red spots on each wing, whose warning colours indicate it is



Silver Y (photo Ryszard Szczygiel)



Six-spot Burnet with cocoon (Bob Eade)



Burnett Companion (Wendy Tyler-Batt)



Mother Shipton (Wendy Tyler-Batt)

[www.monmouthshiremeadows.org.uk](http://www.monmouthshiremeadows.org.uk)

Page 4



# October AGM - new CIO

---

- Trustees have limited liability
- CIO itself can own land (Kingcoed and Ida's Meadow)
- New charity number (No. 1192542)



# Open days & stalls

---

Forthcoming: 🍷

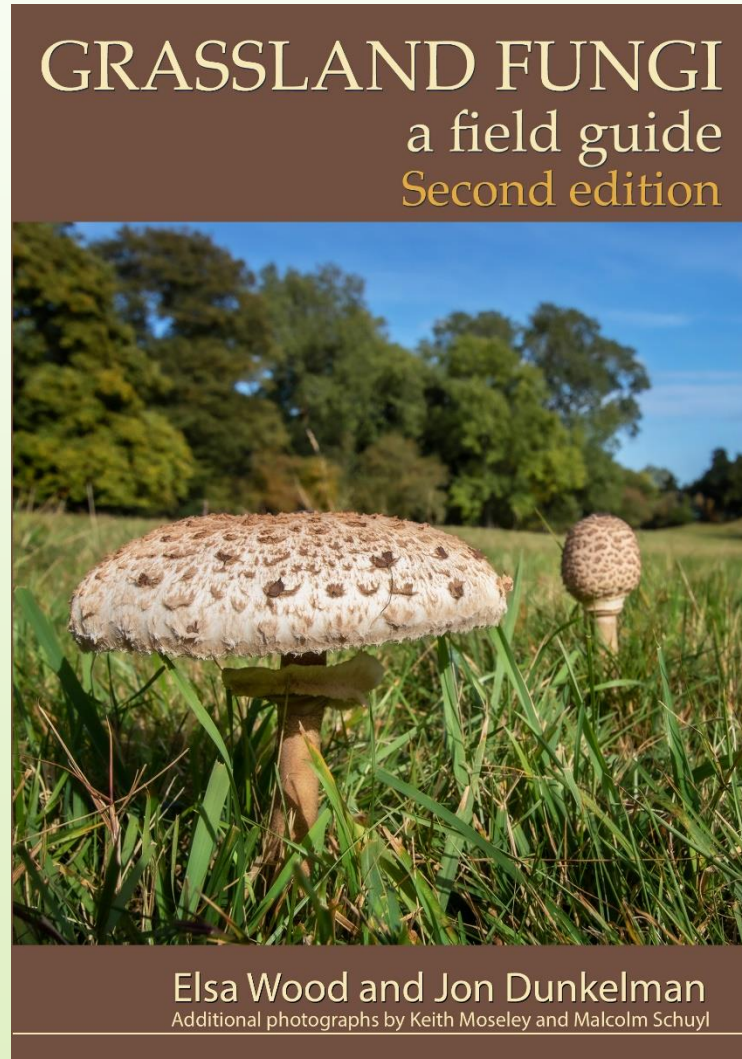
- 13<sup>th</sup> June - around Llanishen
  - Justine & David Scouller, Martin & Patricia Milling, David Hathaway
- 27<sup>th</sup> June - Llanllowell House
  - Hamish Sandison
- 1 August - Monmouth Bee Festival
- 11<sup>th</sup> Sept - Usk Show
- 26<sup>th</sup> Sept - Monmouth Climate Festival
- Also check out Monmouthshire Botany Group walks and Gwent Wildlife Trust events





# Available from NHBS

---



# Jacinth and Jemima

---







# Finance Report 2020-21

---

# Receipts

---

|                             | <u>2020-21</u> |                    | <u>2019-20</u>     |
|-----------------------------|----------------|--------------------|--------------------|
| Membership Subscriptions    | £ 3,789.00     |                    | £ 2,863.75         |
| Donations                   | £ 960.00       |                    | £ 541.01           |
| HMRC Gift Aid               | £ 1,332.66     |                    | £ -                |
| Wales Rural Payment         | £ 3,313.98     |                    | £ 3,251.71         |
| Grazing payments            | £ 500.00       |                    | £ 1,065.00         |
| Events                      | £ -            |                    | £ 1,129.50         |
| Sales                       | £ 5.00         |                    | £ 327.00           |
| Grants                      | £ 1,300.00     |                    | £ 997.00           |
| Wayleave payments           | £ 10.31        |                    | £ -                |
| Interest                    | £ 19.05        |                    | £ 99.00            |
| <i>Restricted funds:</i>    |                |                    |                    |
| Grassland Fungi Book Sales  | £ 2,653.68     |                    | £ 1,871.07         |
| Grassland Fungi Book Grants | £ -            |                    | £ 500.00           |
|                             |                |                    |                    |
| <b>Total Receipts</b>       |                | <b>£ 13,883.68</b> | <b>£ 12,645.04</b> |



# Expenditure

---

|   | <u>2020-21</u> |              | <u>2019-20</u> |
|---|----------------|--------------|----------------|
| Meeting Venue hire                      | 0              |              | 210            |
| Insurance                               | 246.78         |              | 370.06         |
| Pony costs                              | 107.05         |              | 262.87         |
| Meadow Survey costs                     | 0              |              | 165.9          |
| Meadow Maintenance work                 | 135            |              | 843.5          |
| Meadow Equipment                        | 1687.97        |              | 445.05         |
| Mowing Equipment & Maintenance          | 152.93         |              | 88.04          |
| Wet Meadow rent                         | 760            |              | 760            |
| Education ( <i>Wet Meadow signage</i> ) | 1103           |              | 0              |
| Events                                  | 0              |              | 650.45         |
| IT/Website                              | 86.27          |              | 0              |
| Printing                                | 0              |              | 285.7          |
|   |                |              |                |
| Grassland Fungi Book 2nd Edition        | 6283           |              | 0              |
|   |                |              |                |
| <b>Total Expenditures</b>               |                | <b>10562</b> | <b>4081.57</b> |

# Balance

---

| <i>Cash accounting basis</i> |  | <u>2020-21</u> |               | <u>2019-20</u> |
|------------------------------|--|----------------|---------------|----------------|
| Opening bank balance         |  | £ 47,867.17    | 1 April 2019: | £ 39,303.70    |
| Net Surplus                  |  | £ 3,321.68     |               | £ 8,563.47     |
| Closing bank balance         |  | £ 51,188.85    | 31 Mar 2020:  | £ 47,867.17    |



# Our new board

---

This is technically the first meeting of the new charity. As per our constitution clause 13

*each of the charity trustees shall retire from office with effect from the conclusion of the AGM next after his or her appointment but shall be eligible for re-election at that AGM.*



# Election of the Committee

---

Steph Tyler – honorary president

Rachel Morgan – chair

David Llewellyn – treasurer

Clare Adamson

Judith Caruthers

Clare Catto

Sarah Cheese

Dick Coates – warden, Wet Meadow

Marilyn Dunkelman – membership secretary

Pam Manfield – minutes secretary

Steph Poulter – ponies





# Thank You!!

---

WE'LL TAKE QUESTIONS THEN HAVE A SHORT BREAK  
FOLLOWED BY SEAN COLE ON ORCHIDS